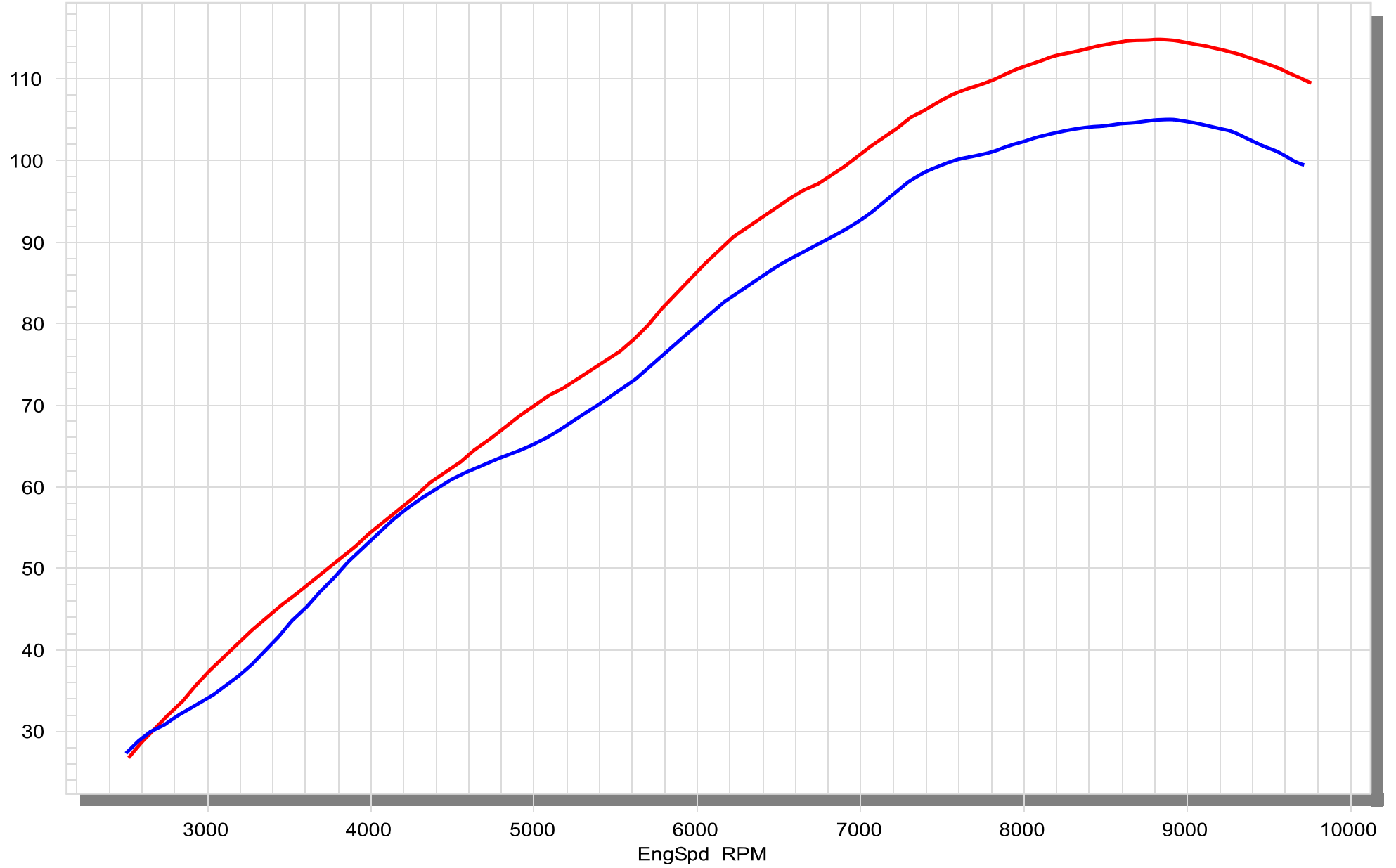
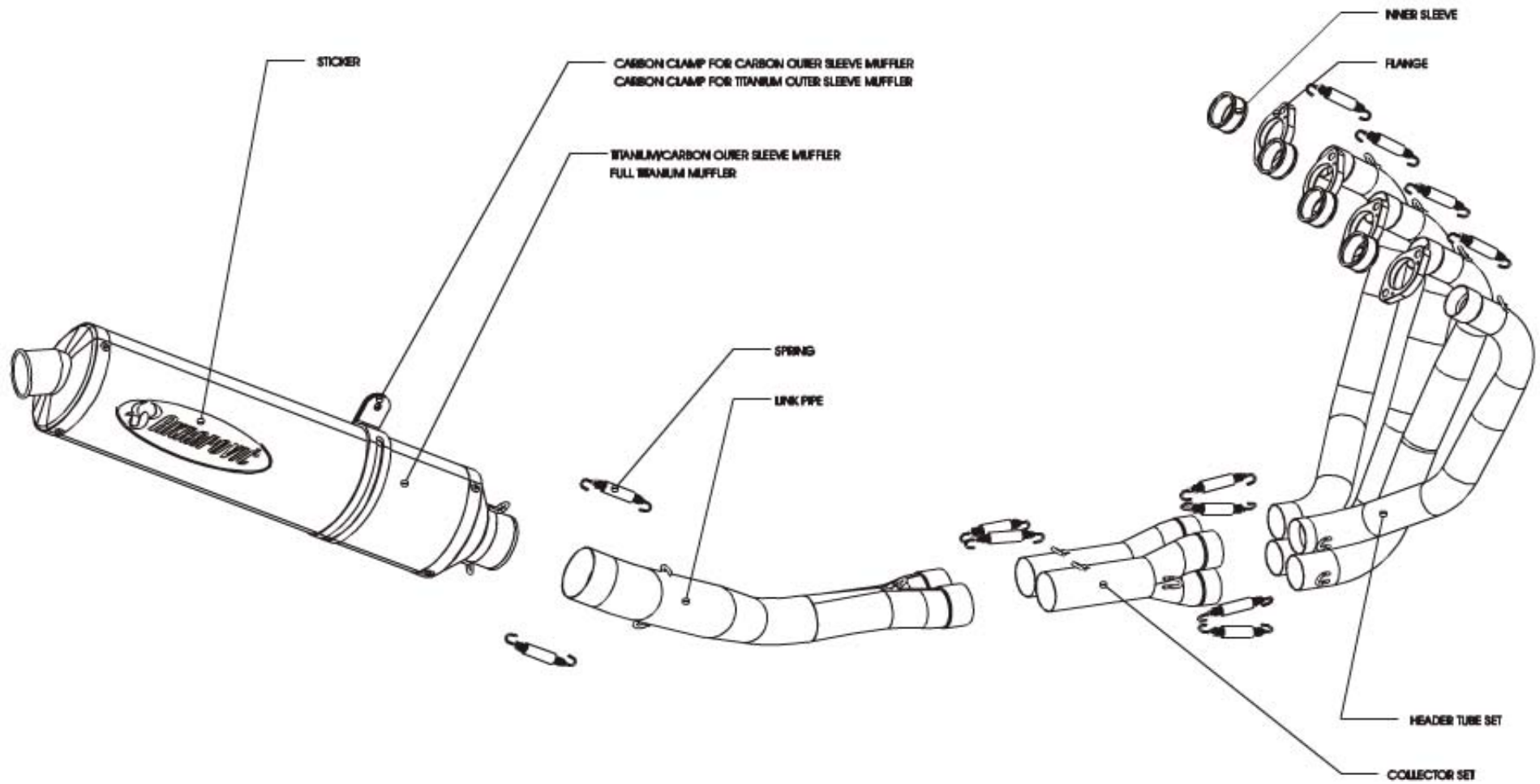


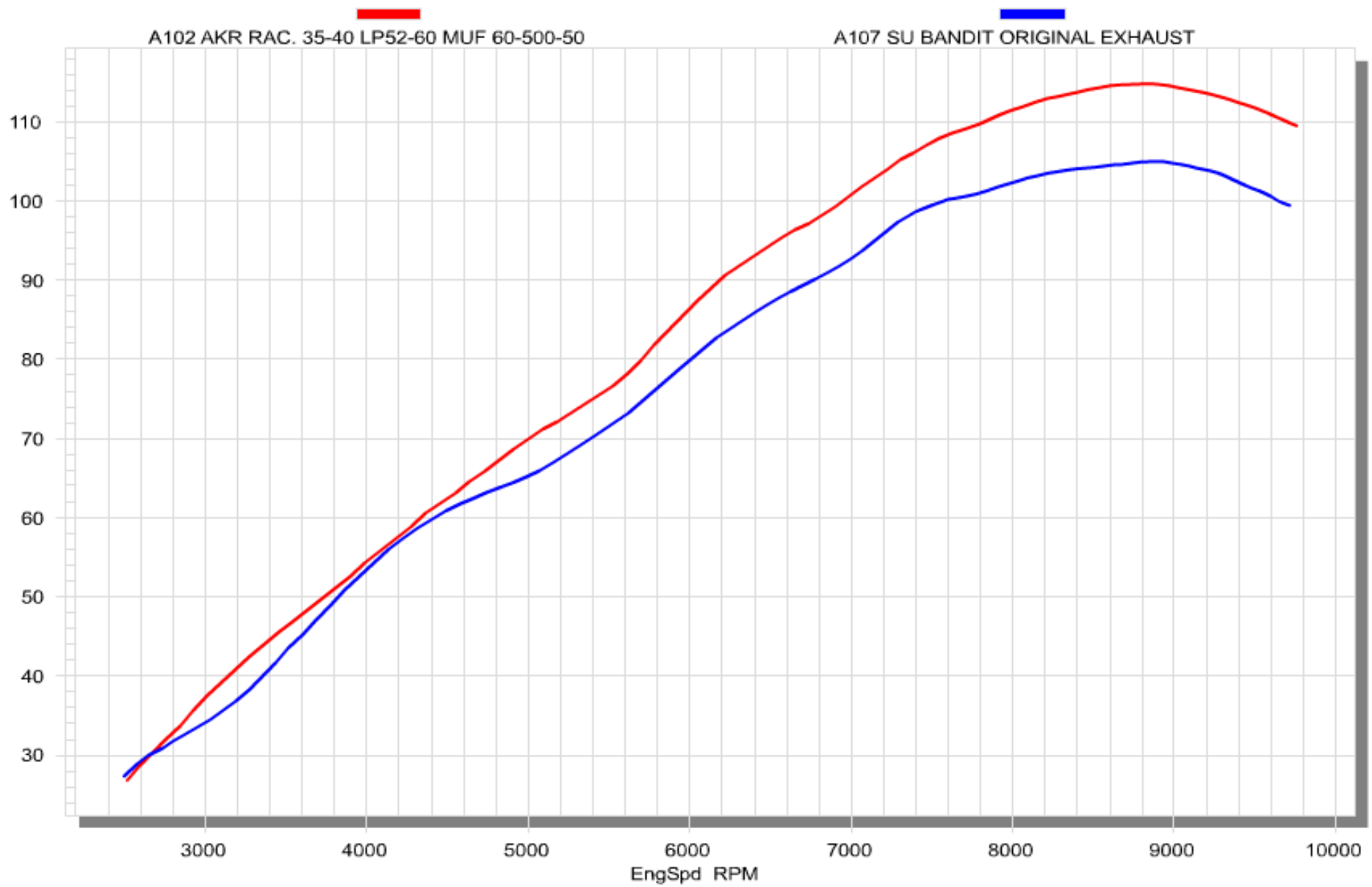


A102 AKR RAC. 35-40 LP52-60 MUF 60-500-50

A107 SU BANDIT ORIGINAL EXHAUST







## SUZUKI GSF 1200 BANDIT (1996- 2005) AKRAPOVIC Racing Line & Evolution Line

The complete racing system for the Bandit 1200 has been totally redesigned. With it, the classically designed racing bike gets more power and a nicer torque curve, and considerable weight savings at the same time. The good looks of the AKRAPOVIC exhaust are complemented with the real racing sound which goes perfectly with this retro-design bike.

The development department has completely redesigned the entire exhaust system for the Bandit 1200. It was developed on a 2001 model bandit, and in addition we tested the Racing Line system on the old 1996-2000 model as well. The results of the testing showed excellent results for both models, and we are therefore offering the Racing Line as an alternative to the SP Line system. The exhaust system is available in two models: the Racing Line, made of stainless steel, and the Evolution Line, made of titanium.

### TECHNICAL

The Racing Line system differs from the SP system in the shape of its header tubes and in the link pipe, as these elements now have the conical shape of the Racing Line. The development team managed to come up with a system which increases both the power and torque curves across the entire rpm range without interference crossover tubes, since it was determined in testing that they were not necessary due to the large displacement of the engine. In the power diagram it can be seen that the engine's power curve is improved throughout the rpm range, from 2700 rpm on up. Its maximum power exceeds the stock system by 10 HP. The original double-walled exhaust system is exceptionally heavy, making the weight savings in using the AKRAPOVIC exhaust system even more pronounced, amounting to over 7 kg.

With the AKRAPOVIC Racing Line system for the SUZUKI BANDIT 1200 you get the finest product on the market. Every last detail has been paid maximum attention. Technologically advanced production and top-quality hand welding are reflected in a final product which other manufacturers use as a benchmark. This remarkable product is the result of the experience which we have gained in the development of exhaust systems for the factory teams in the SUPERBIKE and SuperSport classes. This product was created in our development department by the same team which develops the most demanding exhaust systems for the factory squads.

The AKRAPOVIC Racing Line system is unique. The header tubes, collector and link pipe are made of stainless steel, while the oval-section muffler is available in either carbon-fiber or titanium (the choice of muffler does not affect the overall performance). The entire rear end of the Racing Line system (muffler, carbon-fiber clamp and tension springs) is made using the same materials and technology which we provide to the factory teams in the world championships.

The header tubes are buffed to a high polish, which contrasts nicely with the dark-colored engine, giving an aesthetically pleasing effect. All of the system's lines are designed to precisely follow the contours of the bike, capped off by the oval-section muffler. The Akrapovic Racing Line system for the SUZUKI 1200 Bandit offers superior looks, power and torque for the motor and a considerable savings in weight. The center stand is not useable after installing the system.

The purchase of an AKRAPOVIC exhaust system shows the world that you accept no compromise.

[Exclusion of Certain Liability](#)

### AVAILABLE EXHAUST SYSTEM OPTIONS:

#### Racing line:

PRODUCT CODE:	DESCRIPTION:		
<b>S-S12R1-C</b>	<b>SU GSF 1200 Bandit (N/S)</b> , 1996-05 ; COMPLETE EXHAUST SYSTEM Racing 4-2-1 headers & M-TCE1 titanium/carbon muffler & clamp C2		
<b>S-S12R1-T</b>	<b>SU GSF 1200 Bandit (N/S)</b> , 1996-05 ; COMPLETE EXHAUST SYSTEM Racing 4-2-1 headers & M-TTE1 full titanium muffler & clamp T2		
<b>TECHNICAL DATA</b>	stock	akrapovic	difference
weight measurments	12.2 kg	5.15 kg	7.05 kg
power measurments	105 HP / 9000 rpm	115 HP / 9000 rpm	10 HP / 9000 rpm*
noise mesurments	-	99 db / 4250 rpm	-
legal for street use	NO		

\*MAXIMUM MEASURED POWER DIFFERENCE

[more about Racing line](#) ▶For any price information please contact your local [dealer / importer](#).

## 🔍 Evolution line:

PRODUCT CODE:	DESCRIPTION:		
<b>S-S12RFT1T-C</b>	<b>SU GSF 1200 Bandit (N/S)</b> , 1996-05 ; COMPLETE EXHAUST SYSTEM Racing 4-2-1 titanium conical headers dia 35/40; Titanium collector 4× 40/2× 45; Titanium link pipe dia 2× 45/52/60: & M-TCE1 titanium/carbon muffler & clamp C2		
<b>S-S12RFT1T-T</b>	<b>SU GSF 1200 Bandit (N/S)</b> , 1996-05 ; COMPLETE EXHAUST SYSTEM Racing 4-2-1 titanium conical headers dia 35/40; Titanium collector 4× 40/2× 45; Titanium link pipe dia 2×45/52/60: & M-TTE1 full titanium muffler & clamp T2		
<b>TECHNICAL DATA</b>	stock	akrapovic	difference
weight measurments	12.2 kg	4.3 kg	7.9 kg
power measurments	105 HP / 9000 rpm	115 HP / 9000 rpm	10 HP / 9000 rpm*
noise mesurments	-	99 db / 4250 rpm	-
legal for street use	NO		

\*MAXIMUM MEASURED POWER DIFFERENCE

[more about Evolution line](#) ▶For any price information please contact your local [dealer / importer](#).

copyright 2004, all rights reserved