



Aprilia RSV MILLE (2004)

Slip-On SP Series Exhaust System

# Akrapovic Slip-On SP Series Exhaust System

for the Aprilia RSV Mille (2004)

The Akrapovic SLIP-ON SP SERIES differs from the normal Akrapovic SLIP-ON system only in the selection of materials, since only certain materials are used (stainless steel tubing and titanium for the muffler outer sleeve). Another major difference is that they are equipped with noise dampers and are officially approved for street use (as indicated by a laser engraving on the muffler). The system is an excellent compromise between affordability, performance and aesthetic enhancement of the motorcycle. More demanding Aprilia riders should refer to our Akrapovic EVOLUTION complete system.

## PERFORMANCE

Measurements of the Akrapovic SLIP-ON SP SERIES system on the APRILIA RSV MILLE (without noise damper):

Power: the stock exhaust considerably chokes off the Aprilia's engine. With the Akrapovic SLIP-ON SP SERIES the engine gets to breathe, which is reflected in both the power and torque curves. The power increase is excellent for a first-stage exhaust tuning component. It can be seen starting at 3200 rpm and increases to 7400 rpm, where the stock and Akrapovic curves join. The Akrapovic then jumps again at 8200 rpm and grows all the way to 10000 rpm, where it delivers 128 HP. The max. increased power of 10.9 HP at 6200 rpm is also substantial.

Torque: the torque curve is even better. The Akrapovic strongly improves on the stock curve, especially at around 6000 rpm. The Aprilia twin really pulls!

## CONFIGURATION

The Akrapovic SLIP-ON SP SERIES is made up of two link pipes and two mufflers. The link pipes are cylindrical and made of stainless steel, and are connected to the other exhaust components (muffler and stock header assembly) using free-floating joints secured with silicon-shielded tensioning springs. The muffler outer sleeves for the SP SERIES are made of titanium, while the interior, intake and outlet caps are made of stainless steel. The system is approved for street use with two built-in noise dampers.

	PERFORMANCE		
	stock	AKRAPOVIC	max. increased power
max. rear wheel power HP / rpm (measured on SuperFlow Cycle Dyn)	121.2 / 10000	128 / 10000	10.9 / 6200

	CONFIGURATION		
	header tubes	collector	link pipe
material	-	-	STAINLESS STEEL
tube shape	-	-	CYLINDRICAL

interference crossover tubes	-	lambda sensor	-
header tube inner sleeves	-	header tube flanges	-
header tubes - collector connection	-	collector / header tube - link pipe connection	FREE-FLOATING + SILICON SHIELDED SPRING
link pipe - muffler connection	FREE-FLOATING + SILICON SHIELDED SPRINGS	Smuffler inlet cap /outlet cap	STAINLESS STEEL/ STAINLESS STEEL
muffler metal interior	STAINLESS STEEL	muffler outer sleeve	TITANIUM
muffler clamp	CARBON-FIBER ROAD	muffler bracket	-
noise damper	HOMOLOGATED	heat shield	-

OPTIONS				
link pipe	noise damper	muffler outer sleeve	muffler bracket	heat shield
-	-	-	-	-

	ADDITIONAL DATA				
	stock	AKRAPOVIC		difference	
		S.S. link pipe	TITANIUM link pipe	stock - S.S.	stock - titanium
weight comparison (kg)	8.90	4.06	-	4.84	-
noise measurements (dB / rpm)	stock		AKRAPOVIC		
	94 / 4750		94 / 4750		
possibility of periodic service without removing A.E.S.	oil		oil filter		
	YES		YES		
legal for street use	YES				

Technical specifications of Akrapovic exhaust systems and related products subject to change without notice.

# Akrapovic Slip-On SP Series Exhaust System

for the Aprilia RSV Mille (2004)



CARBON-FIBER  
MUFFLER CLAMPS

Road  
Program

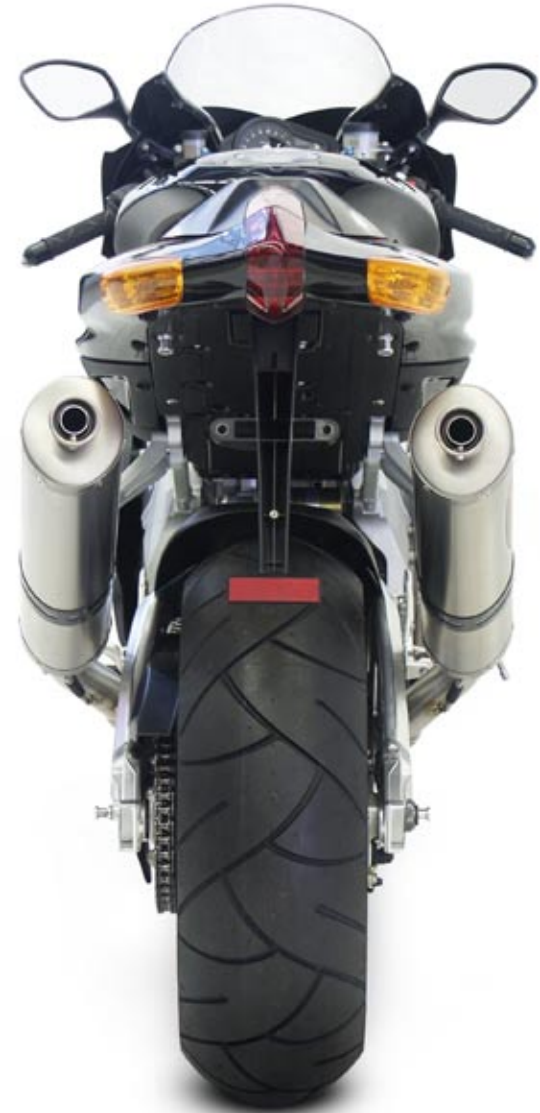
# Akrapovic Slip-On SP Series Exhaust System for the Aprilia RSV Mille (2004)



Akrapovic Exhaust System Technology copyright 2004, all rights reserved

Road  
Program

# Akrapovic Slip-On SP Series Exhaust System for the Aprilia RSV Mille (2004)

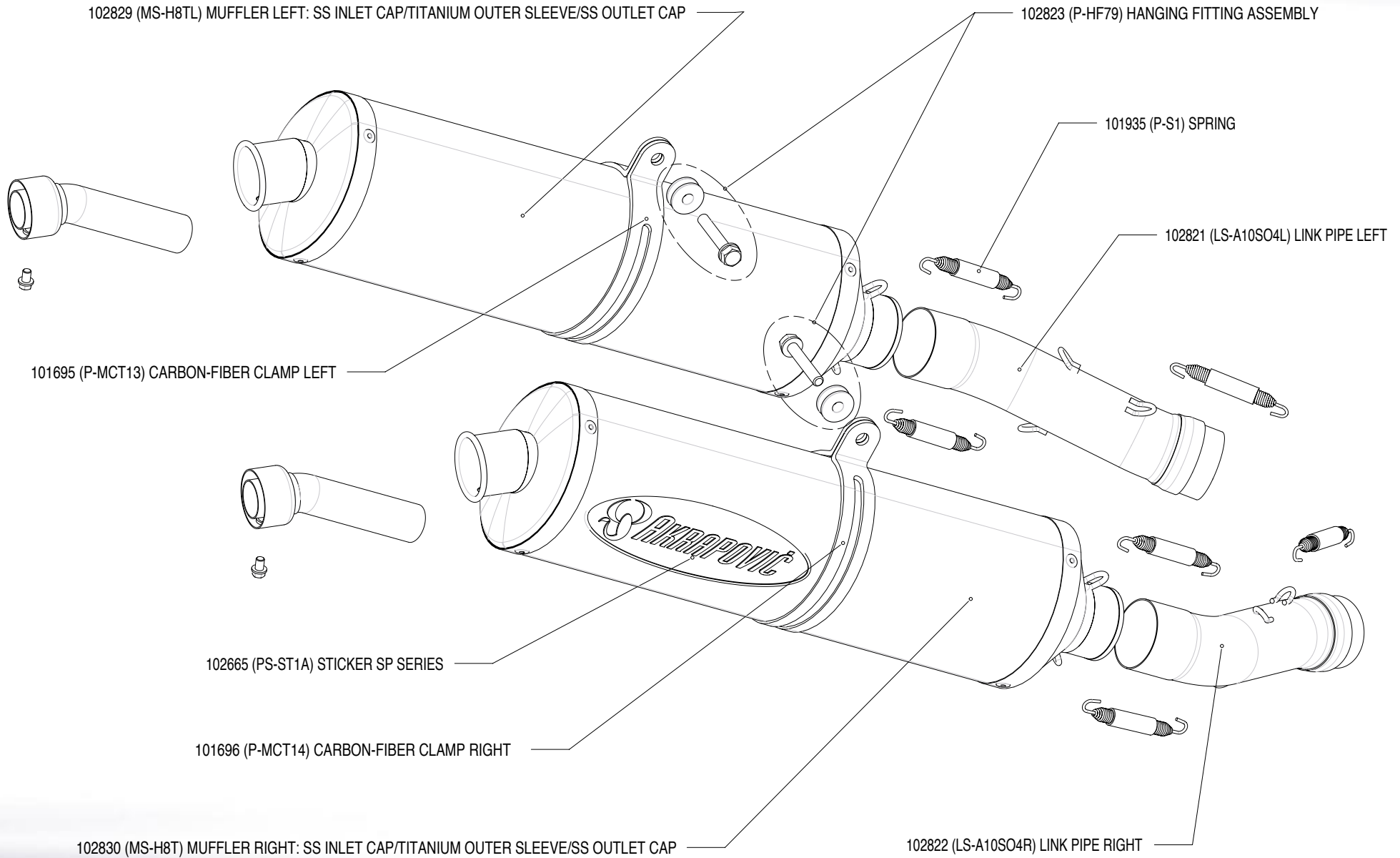


Akrapovic Exhaust System Technology copyright 2004, all rights reserved

Road Program

# Akrapovic Slip-On SP Series Exhaust System

for the Aprilia RSV Mille (2004)




Akrapovic Exhaust System Technology copyright 2004, all rights reserved

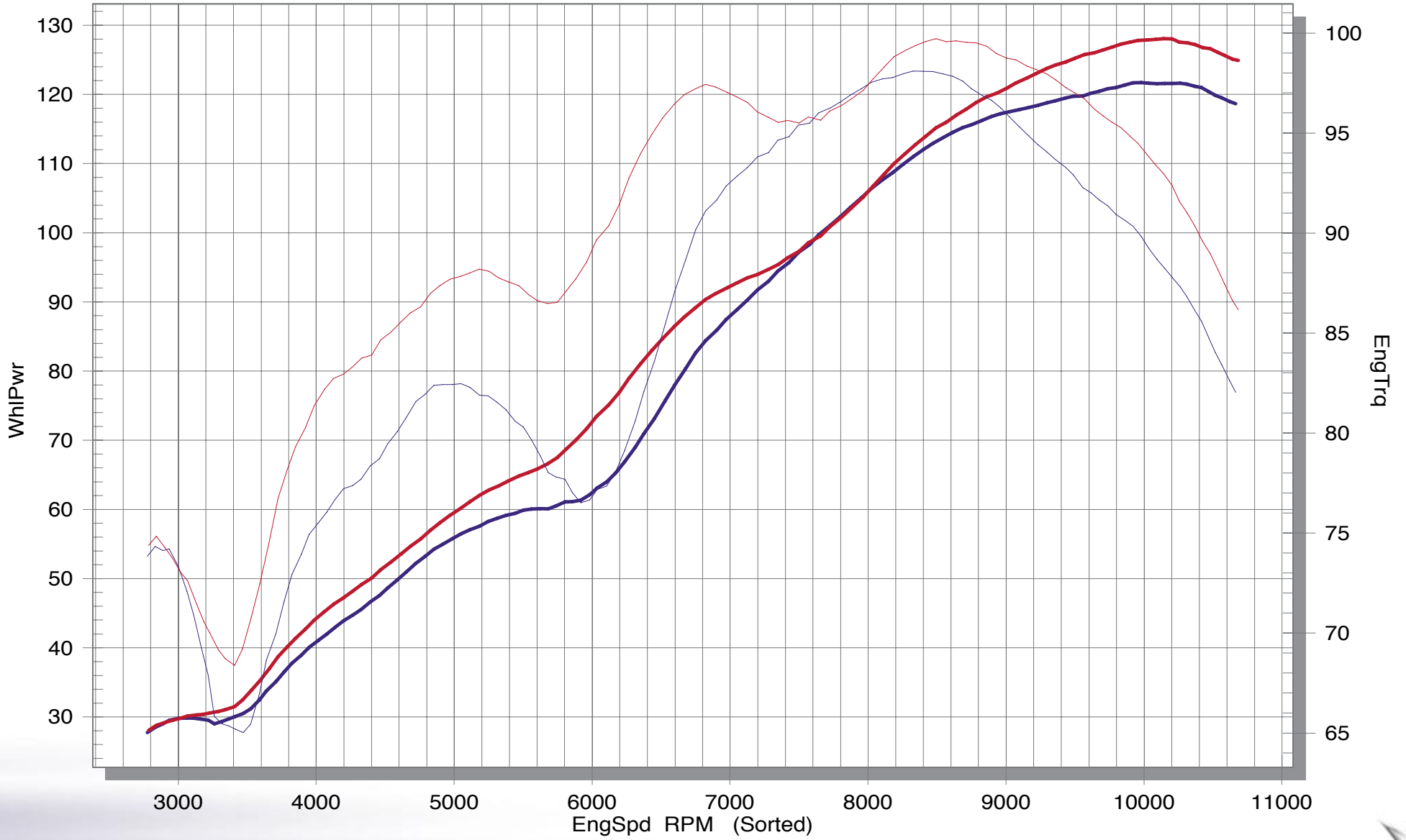
Road Program

# Akrapovic Slip-On SP Series Exhaust System

for the Aprilia RSV Mille (2004)

 STOCK EXHAUST

 AKRAPOVIC SLIP-ON SP SERIES EXHAUST  
(without noise damper)



Road Program



Akrapovic Exhaust System Technology copyright 2004, all rights reserved