



Aprilia RXV 450/550 (2006-2007)

Racing & Evolution Exhaust System

# Akrapovic Racing & Evolution Exhaust System

for the Aprilia RXV 450/550 (2006 - 2007)

The Akrapovic Racing and hexagonal muffler Evolution are our top systems for this model, and are designed for riders who know how to get the most out of them. Their advantages can be clearly seen from the dyno measurements and clearly felt on the racetrack. The muffler comes equipped with an approved spark arrester.

## PERFORMANCE

Measurements of the Akrapovic EVOLUTION/RACING system on the APRILIA RXV 450 (without muffler insert):

Power & Torque: These systems allow the motor to breathe fully throughout the rpm range. The most noticeable improvements are the bike's stronger and quicker response from low revs right up to the top end and the overrev range, where the power increase is extreme. The already powerful motorcycle gains in power, but the power application is smoother, making the bike's brute force easier to control – just what you need for enduro racing. The Akrapovic Racing and Evolution exhaust systems also deliver a major increase in torque throughout the entire rpm range, especially in the lower mid-range and the top of the range.

## CONFIGURATION

The muffler for the Akrapovic Evolution system is the unique Hexagonal offroad design muffler, while the Racing features the oval offroad design. The conical header tube is stainless steel (Racing) or titanium (Evolution). It is attached to the conical SS/titanium link pipe with a sleeve joint secured with a silicon-shielded spring. The link pipe is attached to the muffler in the same manner. The inlet cap is titanium, while the outlet cap for both versions is carbon fiber. The muffler outer sleeve is made of titanium (Evolution) or stainless steel (Racing). There is also an option available with a combination of Racing tubes and Evolution muffler. The system is attached to the bike using Akrapovic carbon-fiber clamps. The system includes an approved spark arrester, which is indicated with a laser engraving on the muffler.

	PERFORMANCE		
	stock	AKRAPOVIC	max. increased power
Aprilia RXV 450 max. rear wheel power HP / rpm (measured on Dynojet ATV)	48.2 / 11200	51.8 / 10900	3.8 / 10900

	CONFIGURATION		
	header tubes	collector	link pipe
material	TITANIUM (Evolution) STAINLESS STEEL (Racing)	-	TITANIUM (Evolution) STAINLESS STEEL (Racing)
tube shape	CONICAL	-	CONICAL

interference crossover tubes	-	lambda sensor	-
header tube inner sleeves	S.S. CNC MACHINED	header tube flanges	ALU CNC MACHINED
header tubes - collector connection	SLEEVE JOINT + SILICON SHIELDED SPRING	collector / header tube - link pipe connection	SLEEVE JOINT + SILICON SHIELDED SPRING
link pipe - muffler connection	SLEEVE JOINT + SILICON SHIELDED SPRING	muffler inlet cap /outlet cap	TITANIUM - CARBON-FIBER
muffler metal interior	TITANIUM	muffler outer sleeve	TITANIUM
muffler clamp	CARBON-FIBER	muffler bracket	-
muffler insert	EU	NOISE DAMPER	-
	US	SPARK ARRESTER	-
		heat shield	-
		catalytic converter	-

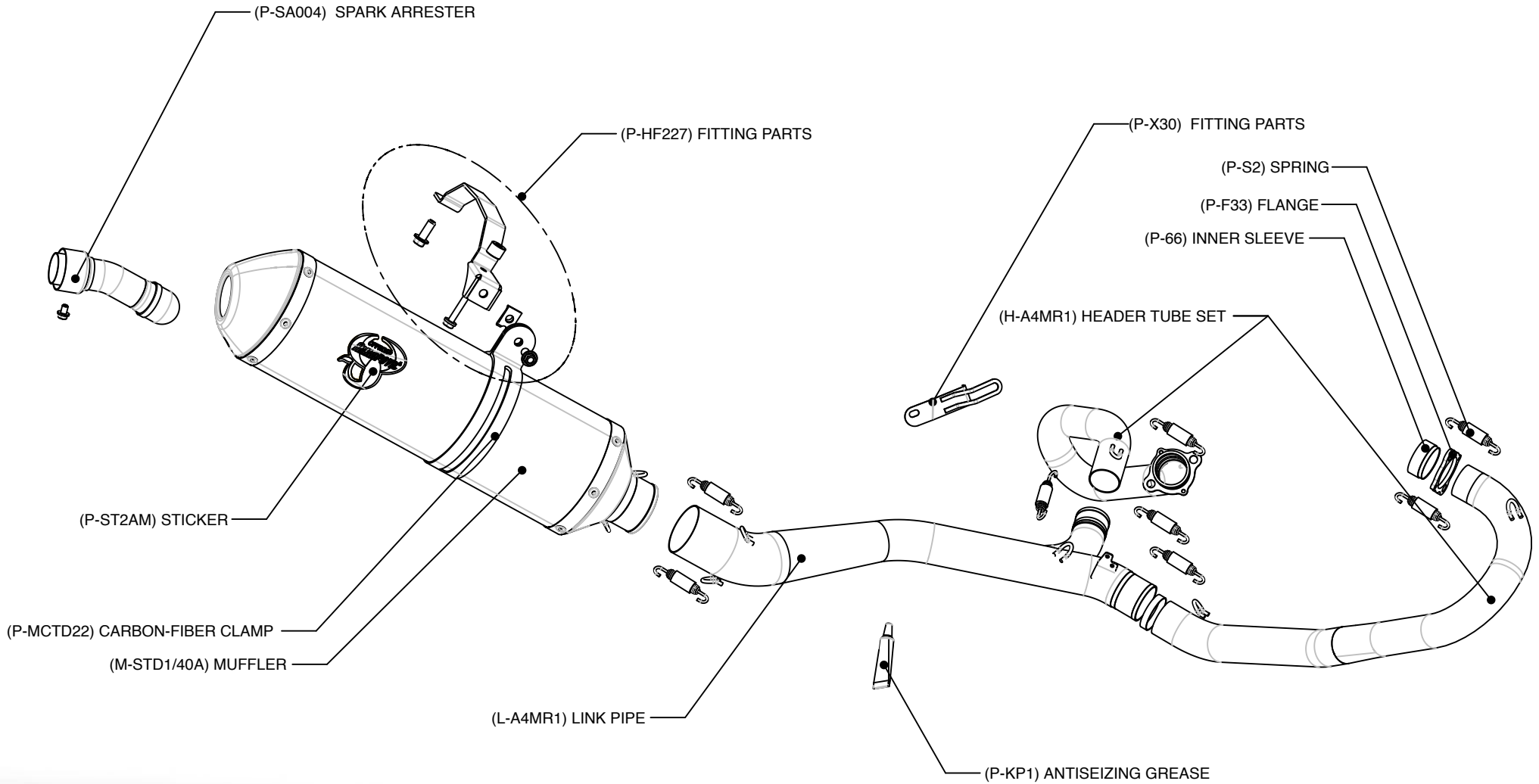
	ADDITIONAL DATA				
	stock	AKRAPOVIC		difference	
		RACING	EVOLUTION	stock - RACING	stock - EVOLUTION
weight comparison (kg)	5.05	3.34	2.84	1.71	2.21
noise measurements (dB / rpm)	stock		AKRAPOVIC		
	94.0 / 6600		96.0 / 6600		
possibility of periodic service without removing A.E.S.	oil		oil filter		
	YES		YES		
legal for street use	NO				

Technical specifications of Akrapovic exhaust systems and related products subject to change without notice.

Product code: 106989 (S-A4MR1-DTA), 106985 (S-A4MR1-ZTA)  
106988 (S-A4MET1T-ZTA)

# Akrapovic Racing Exhaust System

for the Aprilia RXV 450/550 (2006 - 2007)

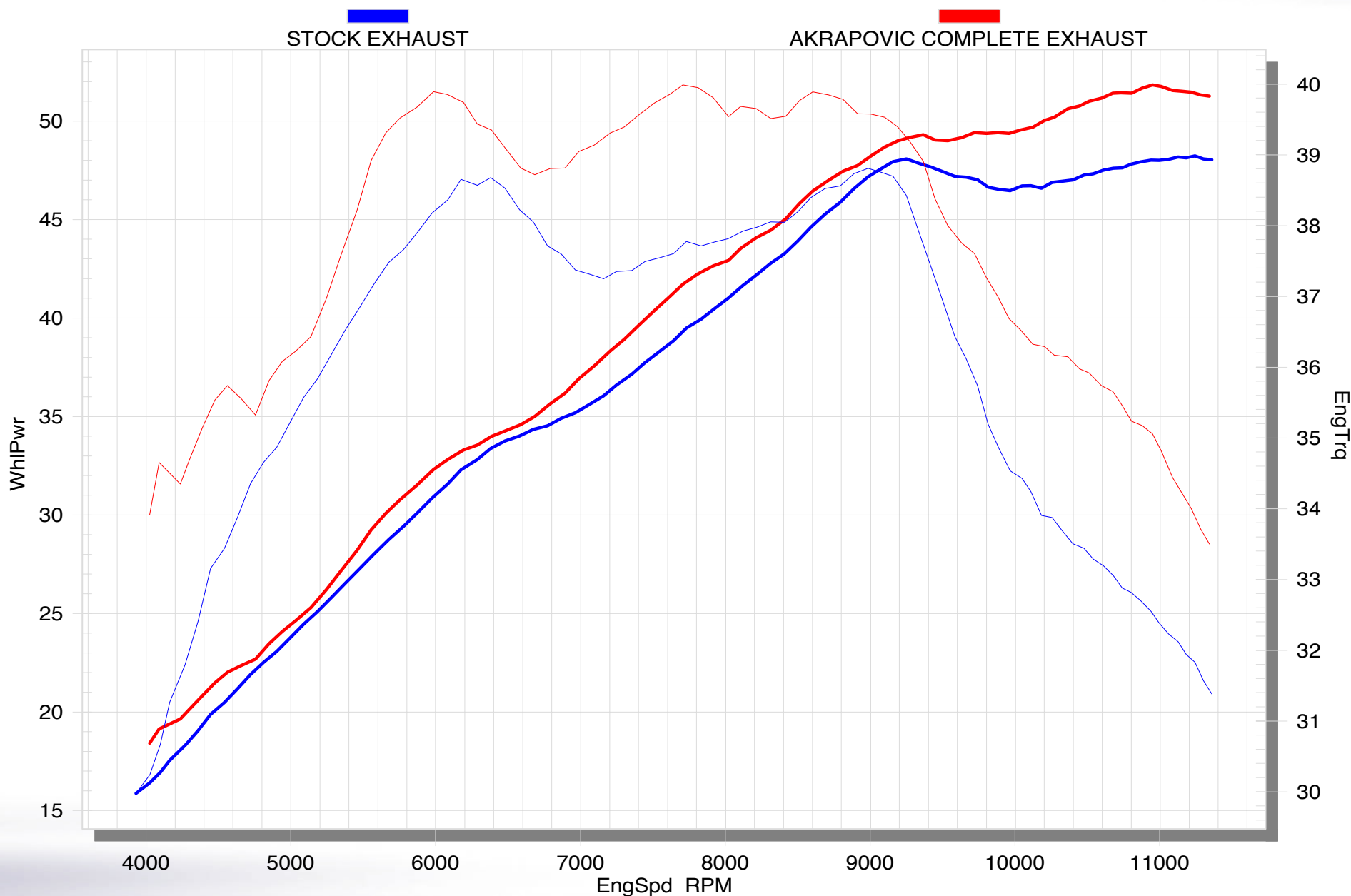


Off-Road Program

Product code: 106989 (S-A4MR1-DTA)

# Akrapovic Racing & Evolution Exhaust System

for the Aprilia RXV 450 (2006 - 2007)



Off-Road Program

Product code: 106989 (S-A4MR1-DTA), 106985 (S-A4MR1-ZTA)  
106988 (S-A4MET1T-ZTA)

